



## HD-CVI Mini Series - Quick Start Guide

**720P**  
Resolution

**1yr**  
Warranty

  
Motion  
Activated  
Recording

**PTZ**  
Control  


**DVR-CVI4120M**  
**DVR-CVI8240M**

## Welcome

Thank you for purchasing our HDCVI DVR! This Quick Start Guide will help you become familiar with your new HDCVI DVR in a very short time. Prior to installation and operation, please read the following safeguard and warning carefully.

## Important Safeguard and Warning

All installation and operations should conform to your local electrical safety codes. We assume no liability or responsibility for fires or electrical shock due to improper handling or installation. We are not liable for any problems caused by unauthorized modifications or attempted repair or equipment. Improper battery use may result in fire, explosion, or personal injury. When replacing the battery, please make sure to use the same model!

**Note: All the installation and operations here should conform to your local electric safety rules.**

### 1. Check Unpacked DVR

Upon receiving your new HDCVI DVR, please check to ensure there is no visible damage. The shipping materials used in the packaging of the DVR can protect against most accidental damage during transportation and should be retained for any future shipping needs. You should also check the items included with your DVR to ensure complete packaging.

### 2. About Front Panel and Rear Panel

For detailed information about the function keys on the front panel and the ports in the rear panel of your HDCVI DVR, please refer to the *User's Manual* located on the resource CD.

### 3. HDD Installation

This series of HDCVI DVR contains only one SATA port for HDD connection. Please use SATA HDDs of 7200rpm or higher that are not "Green" or energy conserving drives. Please follow the instructions below for help in the physical installation of hard disk drives.

**The figurers listed below are for reference only. Slight differences may be found on the front or rear panel.**



1. Remove the top cover from the DVR.

2. Loosely attach four screws to the HDD.

3. Align the HDD with the mounting holes in the bottom tray.



4. Flip the case over and tighten the HDD mounting screws

5. Ensure that the HDD is firmly attached to the case.

6. Connect the SATA and power cables to the HDD and system board.



7. Replace the cover while aligning the front panel clip and lowering the back side.

8. Secure the screws in the rear side panels.

### Important

- You may connect the HDD SATA and power cable prior to installing the HDD within the case.
- When removing the DVR cover, gently tip up from the rear of the unit and lift upwards to avoid damaging the front panel clip.

## 4. Front Panel

The front panel is shown as in Figure 1.

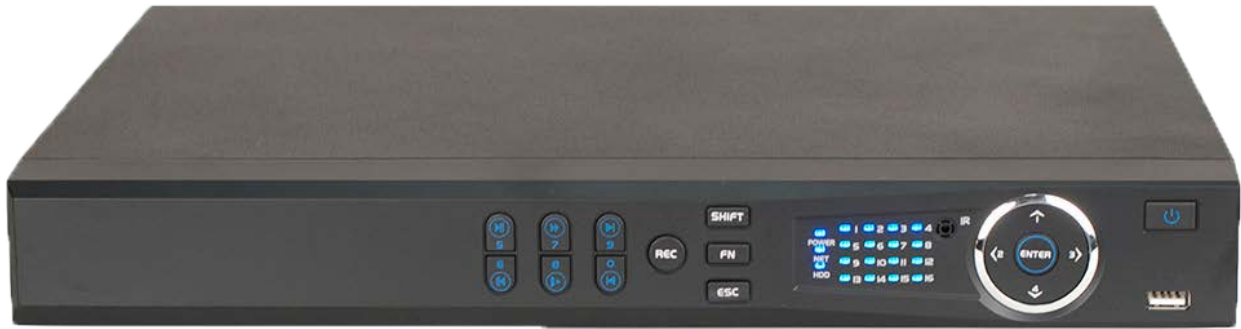


Figure 1

Please refer to the following sheet for front panel button information.

SN	Icon	Name	Function
1		USB port	To connect USB storage device or USB mouse
2	Alarm	Alarm indicator light	When an alarm occurs, this light will appear red to alert you.
3	NET	Network abnormal indicator light	If no network connection is present, this light will appear red to alert you.
3	HDD	HDD abnormal indicator light	If an HDD error occurs or available space is below the threshold, this light will appear red to alert you.
5	IR	IR Receiver	Receives input signal from the remote control.
6	ESC	ESC	Go to previous menu, or cancel current operation.
			When in playback, click to return to real-time monitor mode.
7	FN	Assist	One-window monitor mode, click this button to display assistant function: PTZ control and image color.
			Backspace function when entering text. Press for 1.5seconds to delete the previous character before the cursor.
			In motion detect setup, use the Fn and direction keys to configure.
			In text mode, click to switch between alphabetic, numeric, special characters and upper or lower case.
			Other miscellaneous special functions.
8	Enter	ENTER	Confirm current operation
			Go to default button
			Go to menu
9		Power button	Power button, press and hold for three seconds to shut down DVR.
	▲、▼	Up Down	Activate current control, modify setup, and then move up and down.
			Increase/decrease numeric value.
			Assistant function such as PTZ menu.
	◀、▶	Left Right	Shift current activated control,
			When in playback, click these buttons to control playback the bar.

## 5. Rear Panel

The 4-channel series HDCVI rear panel is shown below in Figure 2.

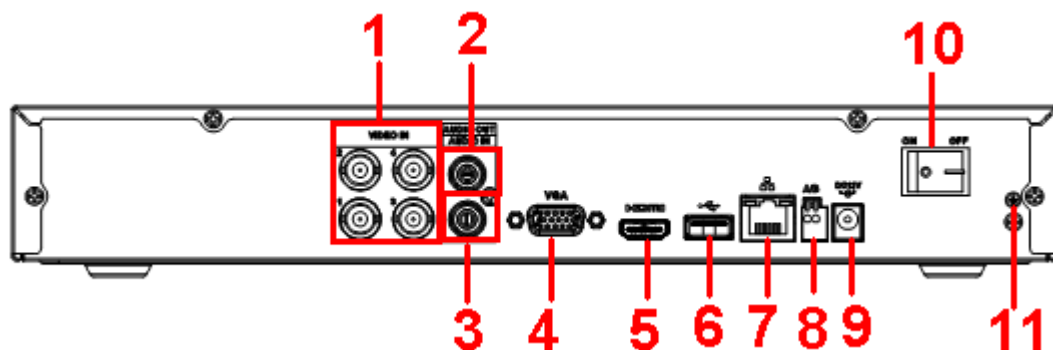


Figure 2

The 8-channel series rear panel is shown below in Figure 3.

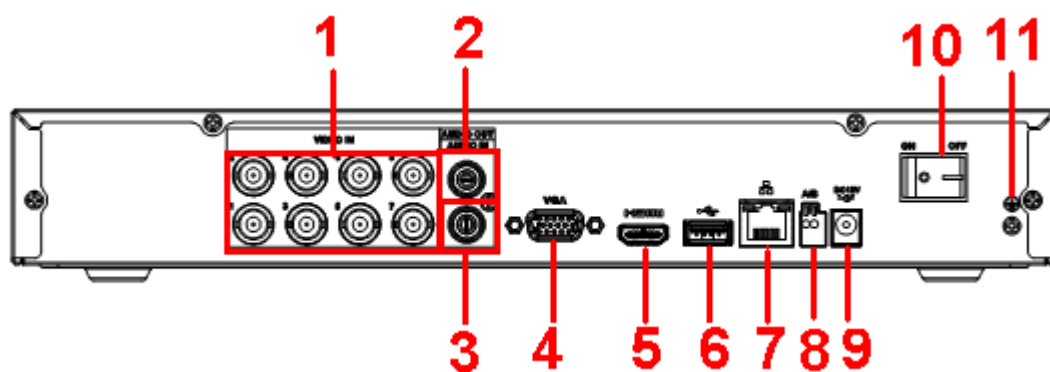
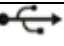


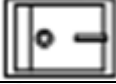



Figure 3

Please refer to the following sheet for detailed information.

SN	Icon	Name	Note
1	VIDEO IN	Video input port	Connect to HDCVI camera, video input signal.
2	AUDIO OUT	Audio output port	Connect to audio output device such as powered PC speakers.
3	AUDIO IN	Audio input port	Connect to audio input device such as powered microphone.
4	VGA	VGA video output port	Connect to computer monitor or other VGA device to view main DVR display.
5	HDMI	High Definition Multimedia Interface video output port	Connect to computer monitor, television or other HDMI device to view main DVR display.
6		USB2.0 port	Connect to USB mouse or external storage device.
7		Network port	10/100M Ethernet port.
8	A	RS485 communication port	RS485 positive port.
	B		RS485 negative port.

9		Power input port	Input 12V DC.
10		Power on-off button	Power on/off button.
11		GND	Ground connection.

## 6. Local Login

After system has booted up, the default video display is in multiple-window mode. Click Enter or left clicking the mouse will bring up the login interface. See Figure 4.

The default (3) system accounts consist of four accounts:

- **Username:** admin. **Password:** admin. (administrator, local and remote).
- **Username:** 888888. **Password:** 888888. (administrator, local only).
- **Username:** 666666. **Password:** 666666. (user-level account for only monitor, playback, backup and etc.).
- **Username:** default. **Password:** default. (non-interactive system user).

### Note:

**For security purposes, please change your password upon first logging in.** Three incorrect login attempts within 30 minutes will trigger a system alarm and five incorrect login attempts within 30 minutes will result in the account being locked!



Figure 4

## 7. Web Service (Internet Explorer)

Open Internet Explorer and enter the DVR IP address in the address bar. The default IP address for your HDCVI DVR is 192.168.1.108, you may access it by entering <http://192.168.1.108> in the address bar. Your system may present a warning asking if you wish to install webrec.cab which is the name of the ActiveX control. Click the Yes button to accept the installation.

If you can't download the ActiveX file, you may need to modify your IE security settings to allow unsigned ActiveX controls to be installed. After installation, the interface will appear as shown in Figure 5.

Please input your user name and password. The default login name is admin and the password is admin also.

**Note: For security reasons, please modify your password after you first login.**

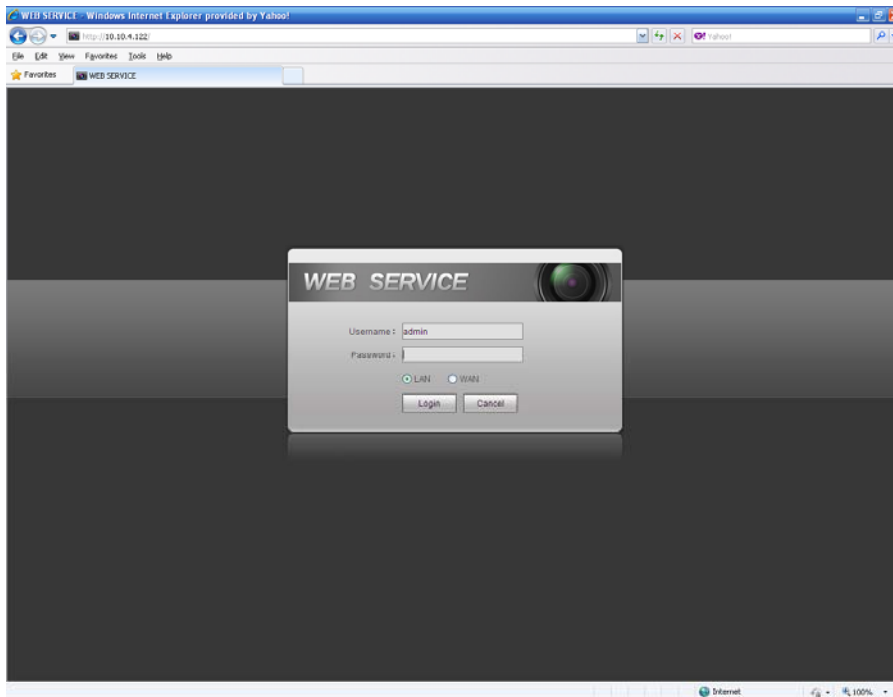


Figure 5

For more detailed instructions on the operation of your HDCVI DVR, please refer to the *User's Manual* included on the resources CD.

## Appendix Toxic or Hazardous Materials or Elements

Component Name	Toxic or Hazardous Materials or Elements					
	Pb	Hg	Cd	Cr VI	PBB	PBDE
Sheet Metal(Case)	○	○	○	○	○	○
Plastic Parts (Panel)	○	○	○	○	○	○
Circuit Board	○	○	○	○	○	○
Fastener	○	○	○	○	○	○
Wire and Cable/AC Adapter	○	○	○	○	○	○
Packing Material	○	○	○	○	○	○
Accessories	○	○	○	○	○	○

### Note

O: Indicates that the concentration of the hazardous substance in all homogeneous materials in the parts is below the relevant threshold of the SJ/T11363-2006 standard.

X: Indicates that the concentration of the hazardous substance of at least one of all homogeneous materials in the parts is above the relevant threshold of the SJ/T11363-2006 standard. During the environmental-friendly use period (EFUP) period, the toxic or hazardous substance or elements contained in products will not leak or mutate so that the use of these (substances or elements) will not result in any severe environmental pollution, any bodily injury or damage to any assets. The consumer is not authorized to process such kind of substances or elements, please return to the corresponding local authorities to process according to your local government statutes.

### Note

- For detailed operation introduction, please refer to our resource CD included in your package for the electronic version of the *User's Manual*.
- This quick start guide is for reference only. Slight differences may be found in the user interface.
- All the designs and software here are subject to change without prior written notice.
- All trademarks and registered trademarks mentioned are the properties of their respective owners.